



# CAPITAL SERVICES

*Sealants & Expansion Joint Systems*



## PRODUCTS

- Expansion Joint Systems
- Pourable Sealants
- Pre-Formed Joint Seals
- Seismic Joints
- Control Joints
- Closed Cell Foams

## FEATURES

- UL Ratings
- UV & Chemical Resistance
- Impact & Abrasion Resistant
- Waterproof
- Performance & **NEW** Installation Enhancement (PIE)

[www.capitalservicesny.com](http://www.capitalservicesny.com)

**800 356-6007**

# CAPITAL SERVICES

The ability to handle movement while preventing water intrusion...that seemingly simple task is at the heart of our industry. Our expansion joints and sealants combine with the efforts of architects and engineers in a process whose success is also dependent upon those installing the materials according to the designers' specifications. These efforts can be complicated by the conditions that are indigenous to each project. That is where our products and the experienced staff of **CAPITAL SERVICES** come in. Whether it is addressing the unique design conditions of a water treatment plant or providing assistance so a project may be completed in cold weather, **Service** is the adhesive that enables the designer and installer to achieve their goals with the right products. That **Service**, design, product selection and recommendation can be quickly accomplished by a toll free call or by visiting our website.

## Table of Contents

**MetaZeal® , Expansion Joint Material.....3**  
*A preformed flexible, waterproof expansion joint material, providing higher heat and UV resistance.*

**Pro-Flex™ 2000 System .....4**  
*This system offers additional protection for parking garages and commercial expansion joint projects where dynamic impact and spalling are of concern.*

**EVAZOTE PHYZITE®, Expansion Joint Material .....4**  
*Concrete colored to aesthetically match the structure providing a waterproof, flexible, UV resistant joint.*

**MetaZeal® AJ, Expansion Joint Material .....5**  
*This flexible material has a working range of 60% compression, 30% tension, allows for a waterproof joint with monolithic directional changes, accommodating skews, curbs and joints around columns, etc.*

**MetaZeal® AJ/MetaCrete System .....5**  
*Combines a preformed joint material with a pourable elastomeric for high use areas.*

**MetaZeal® FR System .....6**  
*MetaZeal, FR provides a waterproof, fire rated expansion joint.*

**Pro-Flex™ 4000 System .....6**  
*Offers a superior elastomeric concrete eliminating expensive armored joints while providing a waterproof, flexible, impact resistant joint*

**EVAZOTE Joint Material .....7**  
*Waterproof and flexible, EVAZOTE has been providing joint solutions for decades.*

**MetaCrete 75 .....7**  
*A pourable elastomeric polymer that provides a flexible, waterproof impact resistant sealant for control joints.*

**Easy-1, Epoxy Injection Machine .....8**  
*This self-contained, quiet machine does not require an air compressor so it will help make your project Easy.*

**Strip Seal Repair .....8**  
*A quick and economic alternative to expensive replacement of strip seals allowing minimum traffic interruption.*

**Cover Plate Details.....8**  
*Available for all systems*

**Performance & Installation Enhancement.....8**



F.D.R. Drive, Manhattan, NY



Baxter Water Treatment Facility, Philadelphia, PA



Mint Street Parking Garage, Charlotte, NC

## MetaZeal® System

**MetaZeal®** is a preformed, pedestrian friendly, waterproof, easy to install, ozone & UV resistant, economical expansion joint. **MetaZeal®** can be fabricated to any size or configuration, making it ideal for projects where conditions may differ from the design, e.g., when the expansion joint is irregular, etc. **MetaZeal®** will accommodate a greater amount of movement over a wider temperature range than typical sealants. Its versatility and performance capabilities make **MetaZeal®** ideal for hydrostatic or seismic conditions. **MetaZeal®**'s unique manufacturing process creates an inert, non-reactive and toxicologically harmless material that is approved for use with potable water and FDA applications. **Serva-Bond** is a modified epoxy adhesive designed for bonding **MetaZeal®** to concrete, masonry, and steel.



Park Towers, Las Vegas, NV

MODEL#	JT OPENING		MATERIAL (width x depth)		Movement Range	
	61°F (in)	16°C (mm)	(in)	(mm)	(in)	(mm)
MZ100	.75	19	1 x 1	25 x 25	.5 - 1.25	13 - 32
MZ125	1	25	1.25 x 2	32 x 51	.63 - 1.56	16 - 40
MZ156	1.25	32	1.56 x 2	40 x 51	.78 - 1.95	20 - 50
MZ188	1.5	38	1.88 x 2	48 x 51	.94 - 2.34	24 - 60
MZ219	1.75	44	2.19 x 2	56 x 51	1.09 - 2.73	28 - 70
MZ250	2	51	2.5 x 2	64 x 51	1.25 - 3.13	32 - 80
MZ281	2.25	57	2.81 x 2	71 x 51	1.4 - 3.5	36 - 90
MZ313	2.5	64	3.13 x 2.5	80 x 64	1.56 - 3.9	40 - 100
MZ344	2.75	70	3.44 x 2.5	87 x 64	1.72 - 4.3	44 - 110
MZ375	3	76	3.75 x 3	95 x 76	1.88 - 4.69	48 - 120
MZ406	3.25	83	4.06 x 3	103 x 76	2 - 5.08	52 - 130
MZ438	3.5	89	4.38 x 3.5	111 x 89	2.19 - 5.47	56 - 140
MZ463	3.75	95	4.63 x 3.5	117 x 89	2.31 - 5.78	60 - 147
MZ500	4	102	5 x 3.5	127 x 89	2.5 - 6.25	64 - 160

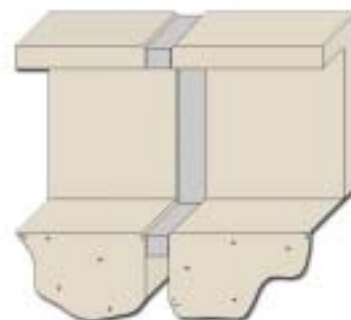
All preformed joint material can be fabricated to any shape or size. Contact us for sizes or configurations not found on this chart.

### Features:

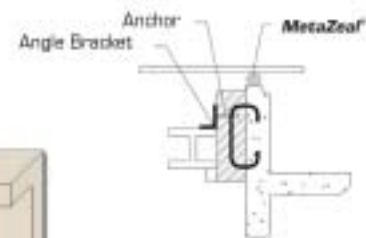
- Higher Heat & UV Resistance
- No Mechanical Anchors
- Can Be Custom Fabricated
- ADA Compliant
- Environmentally Friendly
- Multi-Directional Movement
- High Chemical Resistance
- Factory Fabricated
- Cover Plate Not Required

### Applications:

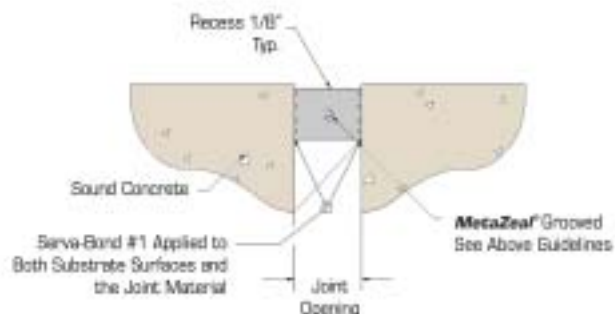
- Stadiums, Ramps & Steps
- Parking Garages
- Airports
- Bridges
- Water Treatment Plants
- Roof Joints
- Curtain Walls



Floor to Wall/Wall to Ceiling



Curtain Wall Detail



## ProFlex 2000 System

The **ProFlex 2000** System provides additional protection to parking structures, commercial and industrial expansion joint projects where the effects of dynamic impacts or spalling are of concern. **ProCrete NH** is a pourable elastomeric concrete, which is 100% solid, non-shrink, spall, weather and chemically resistant header material that will fill any size blockout. The **ProFlex 2000** System has the waterproof and weatherability provided by its use of the preformed **MetaZeal®** expansion joint gland.

### Features:

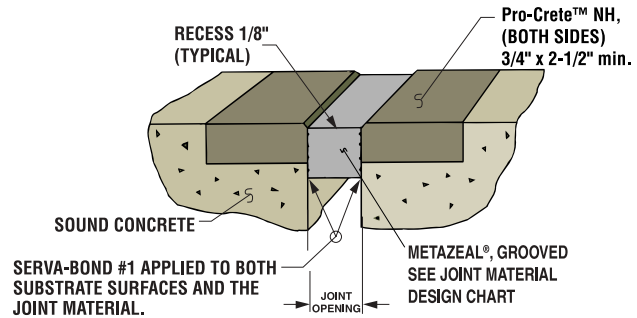
- Crack & Shrink Resistant
- Abrasion & Impact Resistant
- Traffic Resumes in 2 Hours
- Waterproof & UV Resistant

### Applications:

- Parking Decks
- Forklift Areas
- Warehouses



Hamilton Bank Parking Garage, Tampa, FL



## EVAZOTE Phyzite®

**EVAZOTE PHYZITE®** brand joint material was developed for applications where aesthetic considerations require the joint material to match the color of the structure. It contains hindered amine light stabilizers that provide UV protection. **EVAZOTE PHYZITE®** is a low density, closed cell, cross linked ethylene vinyl acetate polyethylene copolymer whose cell generation, using nitrogen, is achieved by physical, rather than chemical means. **EVAZOTE PHYZITE®** joints will provide waterproofing as well as maximum movement capabilities. This characteristic makes it particularly suitable where seismic conditions are a design consideration in architectural joints.



Horizons Condominiums, San Diego, CA

### Features:

- Concrete Color to Match Structure
- UV Resistant
- Working Range of 60% Compression and 30% Tension
- ADA Compliant

### Applications:

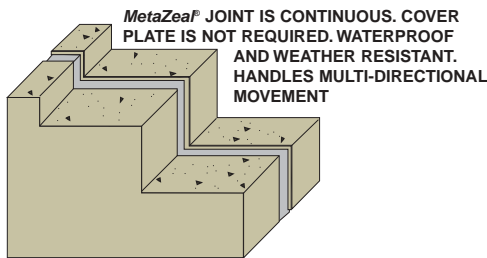
- Architectural Expansion Joints
- Vertical Joints in Buildings
- Wall to Wall, Floor to Floor, Wall to Ceiling

MODEL#	JT OPENING		MATERIAL		Movement Range	
	61°F (in)	16°C (mm)	(width x depth) (in)	(width x depth) (mm)	(in)	(mm)
PZ100	.75	19	1 x 1	25 x 25	.4 - 1.3	10 - 32
PZ125	1	25	1.25 x 2	32 x 51	.5 - 1.63	13 - 41
PZ156	1.25	32	1.56 x 2	40 x 51	.63 - 2	16 - 51
PZ188	1.5	38	1.88 x 2	48 x 51	.75 - 2.44	19 - 61
PZ219	1.75	44	2.19 x 2	56 x 51	.88 - 2.84	22 - 72
PZ250	2	51	2.5 x 2	64 x 51	1 - 3.25	25 - 82
PZ281	2.25	57	2.81 x 2	71 x 51	1.12 - 3.65	28 - 92
PZ313	2.5	64	3.13 x 2.5	80 x 64	1.25 - 4.06	32 - 103
PZ344	2.75	70	3.44 x 2.5	87 x 64	1.38 - 4.47	35 - 113
PZ375	3	76	3.75 x 3	95 x 76	1.5 - 4.88	38 - 123
PZ406	3.25	83	4.06 x 3	103 x 76	1.62 - 5.28	41 - 138
PZ438	3.5	89	4.38 x 3.5	111 x 89	1.75 - 5.69	44 - 144
PZ463	3.75	95	4.63 x 3.5	117 x 89	1.88 - 6	47 - 154
PZ500	4	102	5 x 3.5	127 x 89	2 - 6.5	51 - 165

All preformed joint material can be fabricated to any shape or size. Contact us for sizes or configurations not found on this chart.

## MetaZea<sup>®</sup> AJ

**MetaZea<sup>®</sup> AJ** is a resilient, UV stable, pre-formed, impermeable, flexible expansion joint material. No halocarbon gases (CFC's, HCFC's, HFC's) or volatile hydrocarbons are used at any time during the production of **MetaZea<sup>®</sup> AJ** joint material. **MetaZea<sup>®</sup> AJ** has a working range of 60% compression and 30% tension. **Serva-Bond** is a modified epoxy adhesive designed for bonding **MetaZea<sup>®</sup> AJ** to cured concrete, masonry, and steel.



Yankee Stadium, Bronx, NY

### Features:

- Waterproof, Flexible, Impermeable
- Can Be Custom Fabricated
- Can Be Field or Factory Modified
- Accommodates Multi-Directional Movement

### Applications:

- Stadiums
- Parking Decks
- Commercial Buildings
- Potable Water Facilities
- Pressure Relief Joints
- Isolation Joints
- Hydrostatic Conditions
- Seismic Joints

MODEL#	JT OPENING		MATERIAL		Movement Range	
	61°F (in)	16°C (mm)	(width x depth) (in)	(width x depth) (mm)	(in)	(mm)
AJ100	.75	19	1 x 1	25 x 25	.4 - 1.3	10 - 32
AJ125	1	25	1.25 x 2	32 x 51	.5 - 1.63	13 - 41
AJ156	1.25	32	1.56 x 2	40 x 51	.63 - 2	16 - 51
AJ188	1.5	38	1.88 x 2	48 x 51	.75 - 2.44	19 - 61
AJ219	1.75	44	2.19 x 2	56 x 51	.88 - 2.84	22 - 72
AJ250	2	51	2.5 x 2	64 x 51	1 - 3.25	25 - 82
AJ281	2.25	57	2.81 x 2	71 x 51	1.12 - 3.65	28 - 92
AJ313	2.5	64	3.13 x 2.5	80 x 64	1.25 - 4.06	32 - 103
AJ344	2.75	70	3.44 x 2.5	87 x 64	1.38 - 4.47	35 - 113
AJ375	3	76	3.75 x 3	95 x 76	1.5 - 4.88	38 - 123
AJ406	3.25	83	4.06 x 3	103 x 76	1.62 - 5.28	41 - 138
AJ438	3.5	89	4.38 x 3.5	111 x 89	1.75 - 5.69	44 - 144
AJ463	3.75	95	4.63 x 3.5	117 x 89	1.88 - 6	47 - 154
AJ500	4	102	5 x 3.5	127 x 89	2 - 6.5	51 - 165

All preformed joint material can be fabricated to any shape or size. Contact us for sizes or configurations not found on this chart.

## MetaZea<sup>®</sup> AJ/MetaCrete System

Combines a preformed joint material with a pourable elastomeric for high use areas. This is ideal for larger joints where caulk cannot be used. Monolithic directional changes can also be accomplished by using this system, such as in stadium applications where tread and riser installations need to remain waterproof and accommodate multi-directional movement.

### Features:

- High Movement Capabilities
- Suitable For Seismic Applications
- ADA Compliant
- Can Be Fabricated for Any Size Joint



Veterans Stadium, Philadelphia, PA

## MetaZeal® FR System

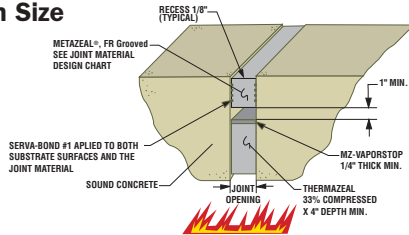
The **MetaZeal® FR** System provides a waterproof, fire resistant, flexible, expansion joint that is easy to install. Fire rating (3 hour F/T/H Rating) and waterproofing is provided by the **MetaZeal® FR** Material (UL 94, HF-1) along with **ThermaZeal** firestop material. **Serva-Bond** is a modified adhesive designed for bonding **MetaZeal® FR** to cured concrete, masonry, and steel.

### Features:

- Fireproof and Waterproof
- No Mechanical Anchors Required
- Large Movement Range
- Can Be Applied In Vertical & Horizontal Joints
- Accommodates Directional Changes

### Applications:

- Floor to Wall, Wall To Ceiling
- Fire Rated Joints With Large Movement
- Fire Rated Joints That Require Waterproofing
- Fire Rated Joints That Are Irregular In Size



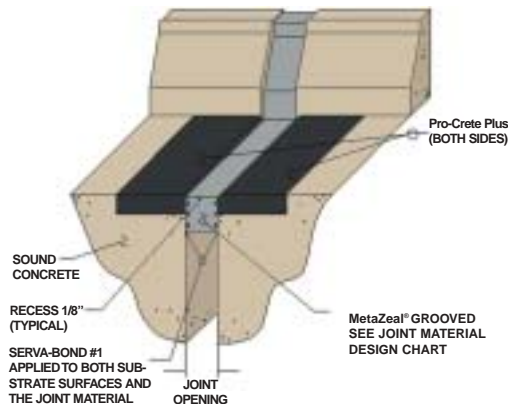
Empire State Plaza, Albany, NY

MODEL#	JT OPENING		MATERIAL (width x depth)		Movement Range	
	61°F (in)	16°C (mm)	(in)	(mm)	(in)	(mm)
FR100	.75	19	1 x 1	25 x 25	.6 - 1.2	15 - 30
FR125	1	25	1.25 x 2	32 x 51	.75 - 1.5	19 - 38
FR150	1.25	32	1.5 x 2	38 x 51	.9 - 1.8	23 - 46
FR175	1.5	38	1.75 x 2	44 x 51	1 - 2	25 - 51
FR213	1.75	44	2.13 x 2	53 x 51	1.25 - 2.5	33 - 64
FR238	2	51	2.38 x 2	60 x 51	1.4 - 2.8	36 - 71
FR263	2.25	57	2.63 x 2	67 x 51	1.6 - 3.2	40 - 80
FR300	2.5	64	3 x 2	76 x 51	1.8 - 3.6	46 - 91
FR325	2.75	70	3.25 x 2.5	83 x 64	1.95 - 3.9	50 - 100
FR350	3	76	3.5 x 2.5	89 x 64	2.1 - 4.2	53 - 107
FR375	3.25	83	3.75 x 3	95 x 76	2.25 - 4.5	57 - 114
FR413	3.5	89	4.13 x 3	105 x 76	2.5 - 4.95	63 - 126
FR475	4	102	4.75 x 3	121 x 76	2.85 - 5.7	72 - 145

All preformed joint material can be fabricated to any shape or size. Contact us for sizes or configurations not found on this chart.

## ProFlex 4000 System

The **ProFlex 4000** System offers a superior elastomeric concrete that eliminates the need for expensive armored joint systems. The use of the **ProFlex 4000** System also does away with the problems caused by oxidation, or repairs and hazards that result from the use of metal joints. High compressive strength, waterproof flexibility, monolithic directional changes and impact deadening are provided by the **ProFlex 4000** System.



Maipo River Bridge, Naltagua Valley, Chile

### Features:

- Armorless Joint System
- Non-Oxidizing
- No Mechanical Anchors
- Fast Set, Resume Traffic in Hours
- Monolithic Directional Changes
- Accommodates Multi-Directional Movement

### Applications:

- High Impact Areas
- Bridges
- Railroads
- Forklift Areas
- Airports

## EVAZOTE

**EVAZOTE** joint material provides waterproofing over a wide movement range and where distortion capabilities are required. **EVAZOTE** can accommodate skews, curbs, joints around columns and other irregular conditions. **EVAZOTE** has a working range of 60% compression and 30% tension. **EVAZOTE** has for many years provided structures with waterproof flexible joints in a wide range of applications including parking decks, pressure relief joints, irregular joints, etc.



Court of Appeals Building, Albany, NY

MODEL#	JT OPENING		MATERIAL		Movement Range	
	61°F (in)	16°C (mm)	(width x depth) (in)	(width x depth) (mm)	(in)	(mm)
EV100	.75	19	1 x 1	25 x 25	.4 - 1.3	10 - 32
EV125	1	25	1.25 x 2	32 x 51	.5 - 1.63	13 - 41
EV156	1.25	32	1.56 x 2	40 x 51	.63 - 2	16 - 51
EV188	1.5	38	1.88 x 2	48 x 51	.75 - 2.44	19 - 61
EV219	1.75	44	2.19 x 2	56 x 51	.88 - 2.84	22 - 72
EV250	2	51	2.5 x 2	64 x 51	1 - 3.25	25 - 82
EV281	2.25	57	2.81 x 2	71 x 51	1.12 - 3.65	28 - 92
EV313	2.5	64	3.13 x 2.5	80 x 64	1.25 - 4.06	32 - 103
EV344	2.75	70	3.44 x 2.5	87 x 64	1.38 - 4.47	35 - 113
EV375	3	76	3.75 x 3	95 x 76	1.5 - 4.88	38 - 123
EV406	3.25	83	4.06 x 3	103 x 76	1.62 - 5.28	41 - 138
EV438	3.5	89	4.38 x 3.5	111 x 89	1.75 - 5.69	44 - 144
EV463	3.75	95	4.63 x 3.5	117 x 89	1.88 - 6	47 - 154
EV500	4	102	5 x 3.5	127 x 89	2 - 6.5	51 - 165

All preformed joint material can be fabricated to any shape or size. Contact us for sizes or configurations not found on this chart.

### Features:

- Waterproof, Flexible, Impermeable
- Monolithic Directional Changes
- Inert, Non-Reactive, Non-Toxic
- Environmentally Friendly
- ADA Compliant
- Grooved For Superior Bond Strength

### Applications:

- Pressure Relief Joints
- Expansion Joints Under Hydrostatic Pressure
- Expansion Joints With Multi-Directional Movement
- Plazas, Pedestrian Areas Irregular and Varying Sized Joints

## MetaCrete 75

**MetaCrete 75** is a pourable elastomeric polymer, providing a flexible, waterproof, impact and abrasion resistant sealant for control joints. It is particularly useful in joints that have damaged nosing areas. Its high compressive strengths and excellent elongation properties allow **MetaCrete 75** to protect joint edges from impact damage and is an ideal material for industrial applications such as warehouses, fork lift areas, etc. **MetaCrete 75** will help protect joint edges from impact damage and is an ideal material for industrial applications such as warehouses, fork lift areas, etc. Available in cartridge or liquid form, **MetaCrete 75** is suitable for projects large or small. Its rapid set time combined with the Easy-1 Control Joint Machine allows project installations to be quick and economical while minimizing down time for the facility. **MetaCrete 75** is suitable for both interior and exterior use and will accommodate movement and traffic without becoming brittle.



Albany International Airport, Albany, NY

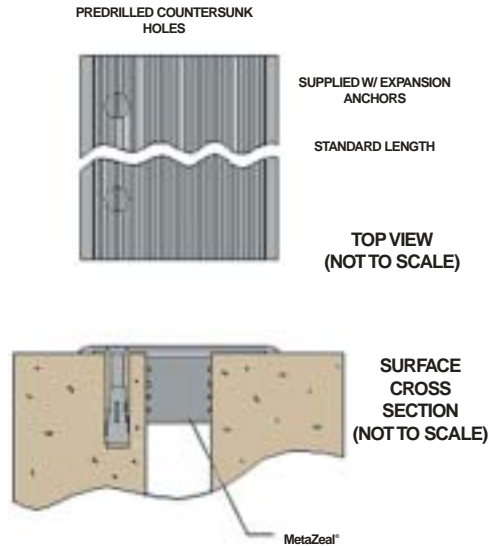
### Features:

- Armorless Joint System
- Non-Oxidizing
- No Mechanical Anchors
- Fast Set, Resume Traffic in Hours
- Adheres to Asphalt, Concrete and Steel

### Applications:

- Parking Decks
- Forklift Areas
- Warehouses
- High Impact Areas
- Airports

## Cover Plate Details Are Available For All Systems



## Performance & Installation Enhancement (PIE)

This added feature allows for superior performance of the joint system while increasing ease of installation.

## Easy-1 Control Joints & Epoxy Injection Systems

### For Waterproofing, Structural Repair, Control Joints

The *Easy-1* is available with various options to help make your project Easy. Whether you need heated tanks for getting the project done in cold temperatures, modified models to access difficult applications, or the *Easy-1* CJ for control joints, you will receive unmatched technical support to make your project an *Easy-1*. We also manufacture a variety of resins to suit all sealant needs.

### Features

- Self Contained
- No Air Compressor Required
- Easy Adjustable Ratio
- Stores Unused Resin In Tanks
- Fill Tanks During Operation
- Multi-Port System
- Built In Clean Up Unit
- Economical & Quiet



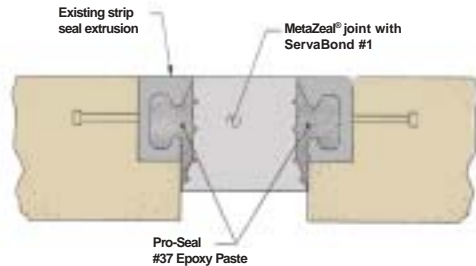
## Strip Seal Repair

Ideal for stage construction and rehabilitation projects, or for situations where the joint opening has varied from the original plans

This technique allows the existing steel extrusions to remain in place, avoiding costly steel fabrication. Please contact us at our toll free number or visit our website for materials required and procedure instructions.

All our preformed joint materials can be fabricated to any shape or size that your project might require.

### Strip Seal Repair



For further information and technical support, please contact:



# CAPITAL SERVICES

112 Morris Road Schenectady, NY 12304

Tel: 800-356-6007 • 518-344-7777 • Fax: 518-346-1110 • www.capitalservicesny.com

**Warranty:** Manufacturer disclaims all implied warranties, including the warranties of merchantability and fitness for a particular purpose. Manufacturer makes no other warranty, either expressed or implied. Purchaser assumes all risks. *MetaZeal* and *Phyzite* are registered trademarks of CAPITAL SERVICES OF NEW YORK, INC. ©2005 CAPITAL SERVICES OF NY, INC.



SEE US IN



DIRECTORY



CATALOG FILES



CD



SWEETS.COM